

Democratizing Conservation to Achieve 30 by 30

Empowering Global Conservation Partners
through Access to Advanced Technologies

Jeffrey Allenby, GISP

Director of Geospatial Technology
Lincoln Institute of Land Policy

Susan Minnemeyer

Vice President of Conservation Technology
Chesapeake Conservancy



LINCOLN INSTITUTE
OF LAND POLICY



CONSERVATION
INNOVATION
CENTER
CHESAPEAKE CONSERVANCY


Moving from Data to Insights



LINCOLN INSTITUTE
OF LAND POLICY



CONSERVATION
INNOVATION
CENTER
CHESAPEAKE CONSERVANCY

An aerial photograph of a landscape featuring a river, fields, and forests. The image is overlaid with a semi-transparent data visualization, likely a Digital Surface Model (DSM) or Digital Elevation Model (DEM), showing elevation changes in various colors (red, orange, yellow, green, blue). The river flows from the bottom left towards the right, with a large island in the middle. The surrounding land is a mix of green fields and autumn-colored forests.

*“Getting the right practices,
in the right places,
at the right scale”*

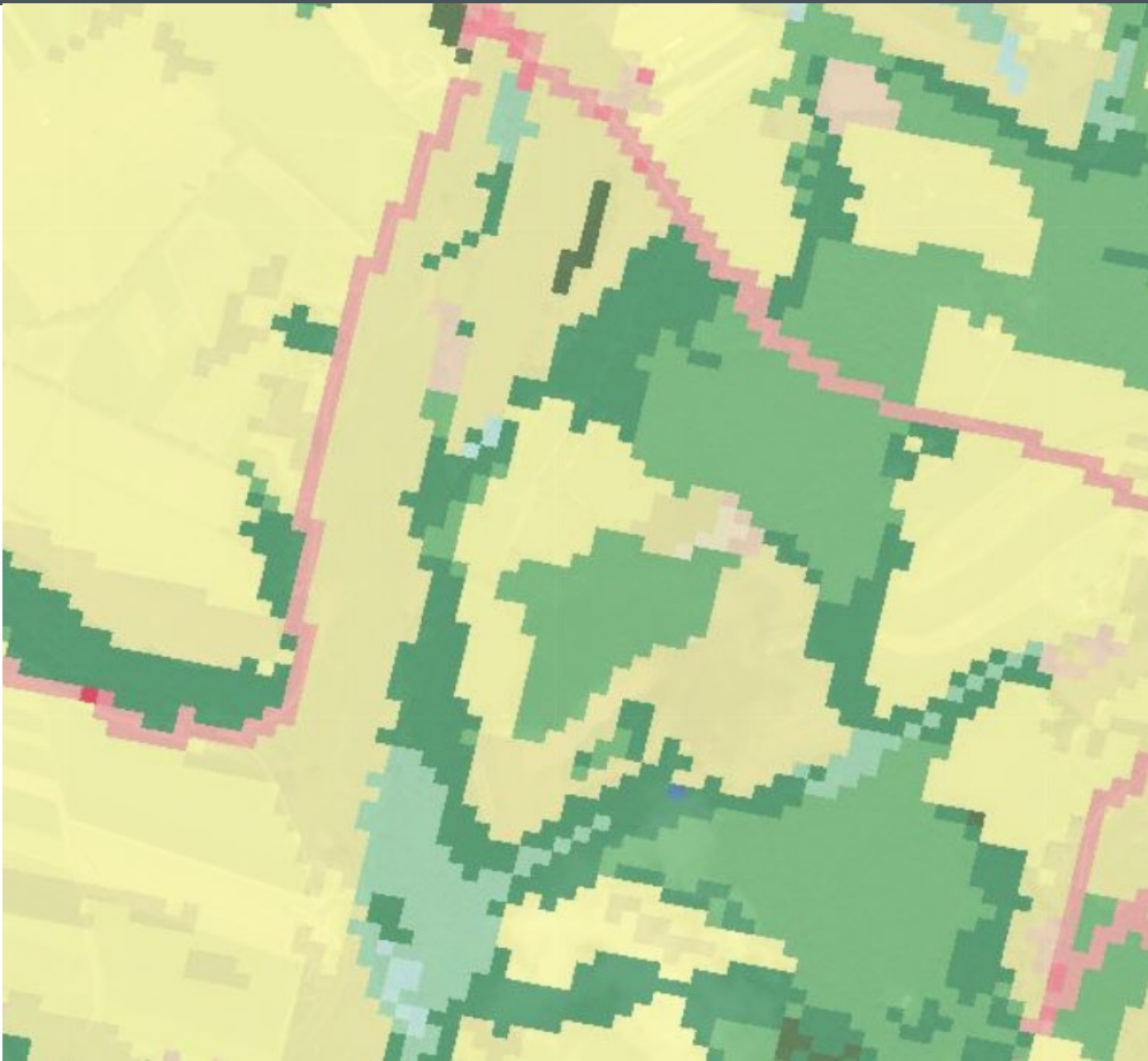
Solving Challenges with the “Right” Data



LINCOLN INSTITUTE
OF LAND POLICY



CONSERVATION
INNOVATION
CENTER
CHESAPEAKE CONSERVANCY



Solving Challenges with the “Right” Data



Moving from Opportunity to Strategy



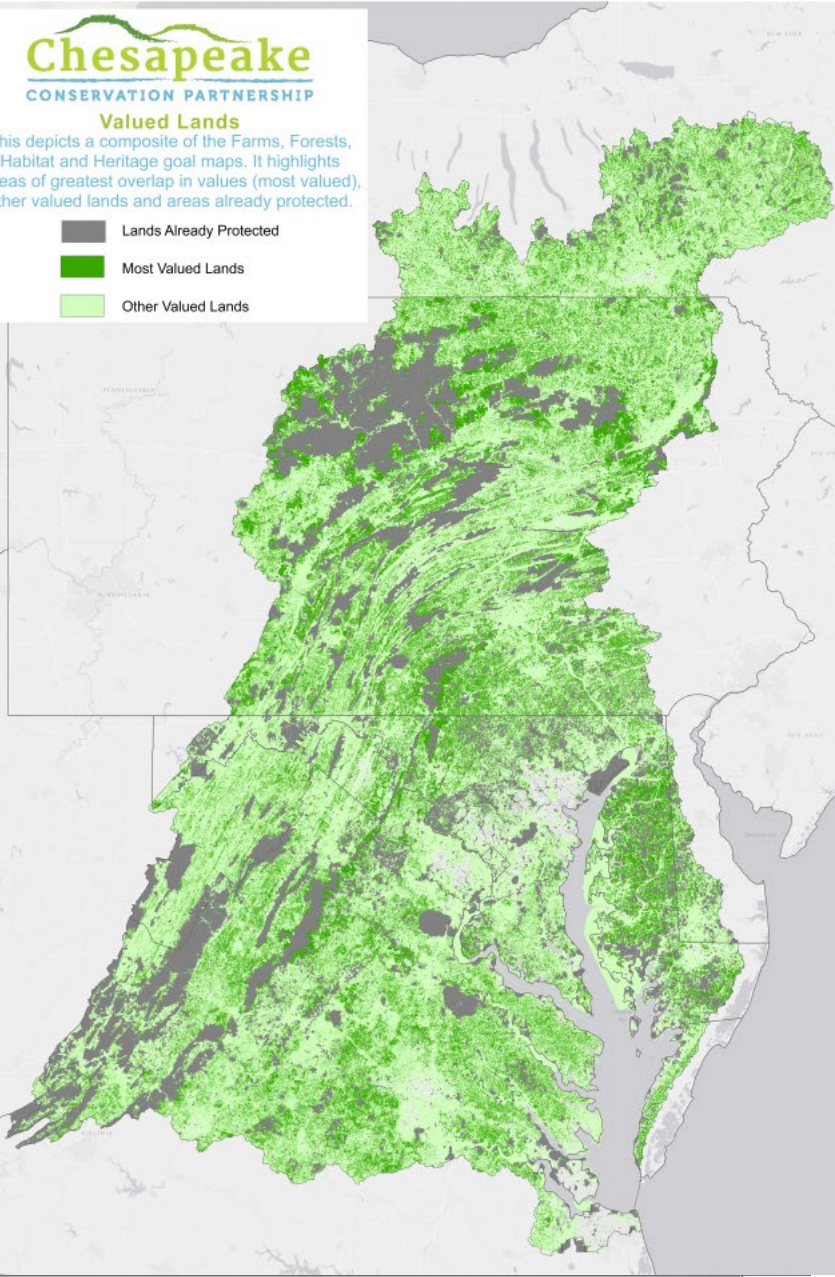
Moving from Opportunity to Strategy

Chesapeake CONSERVATION PARTNERSHIP

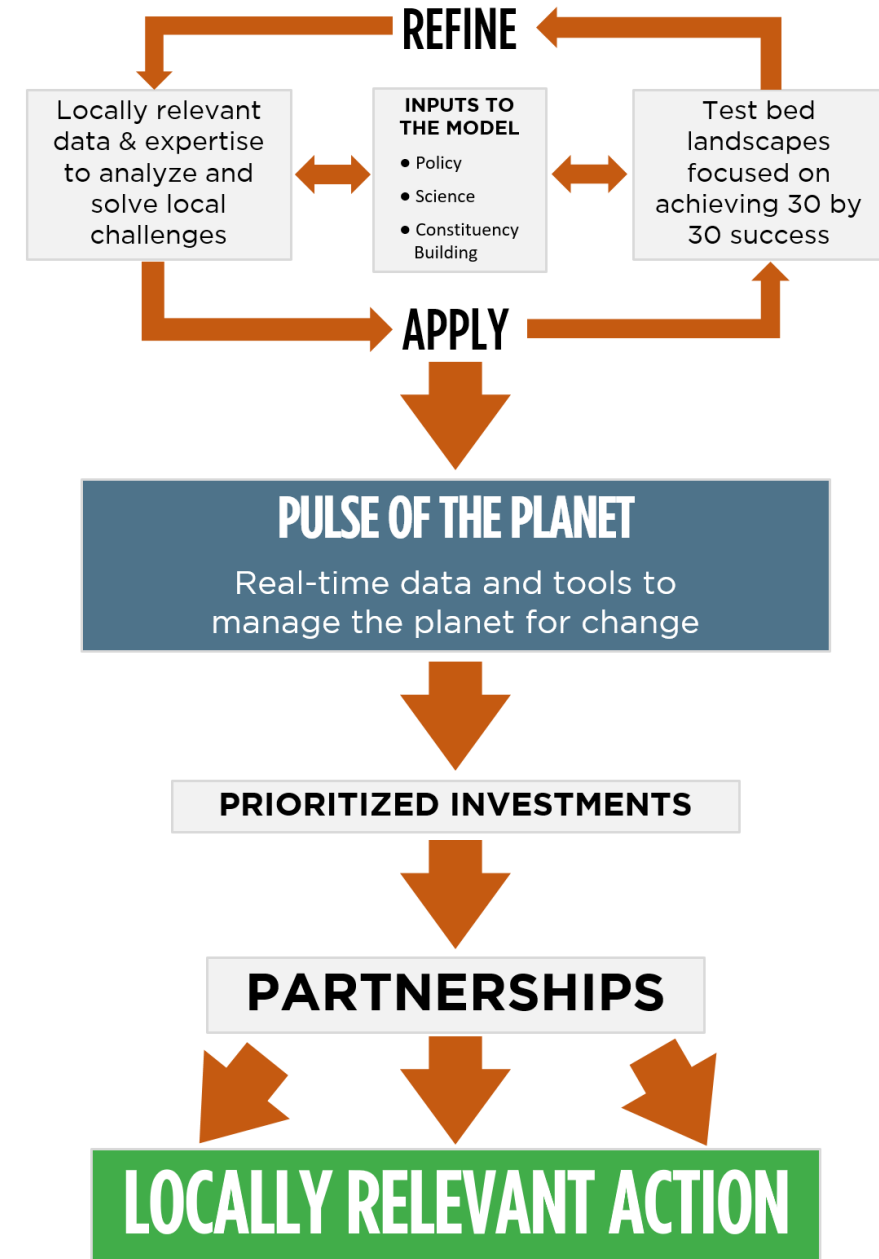
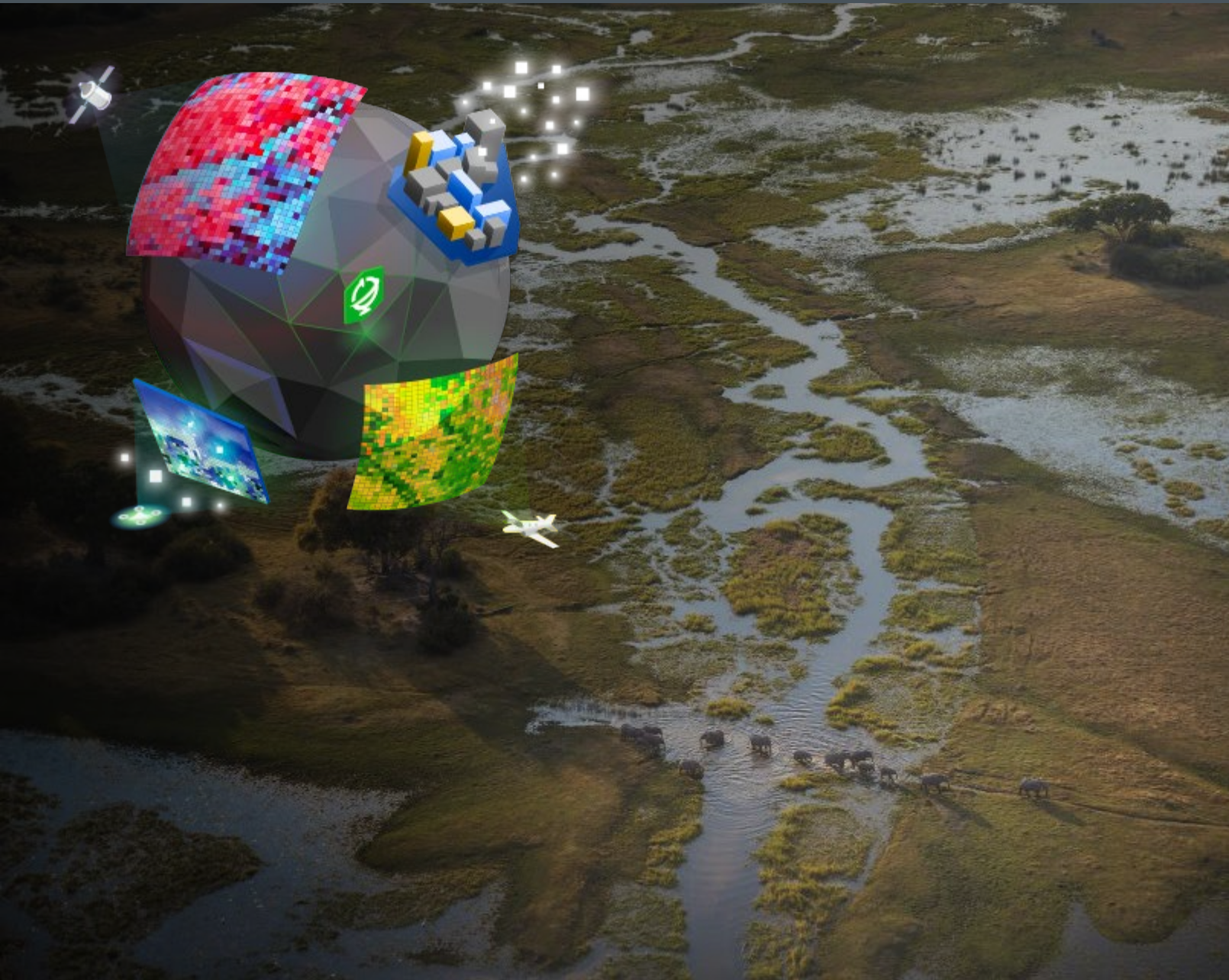
Valued Lands

This depicts a composite of the Farms, Forests, Habitat and Heritage goal maps. It highlights areas of greatest overlap in values (most valued), other valued lands and areas already protected.

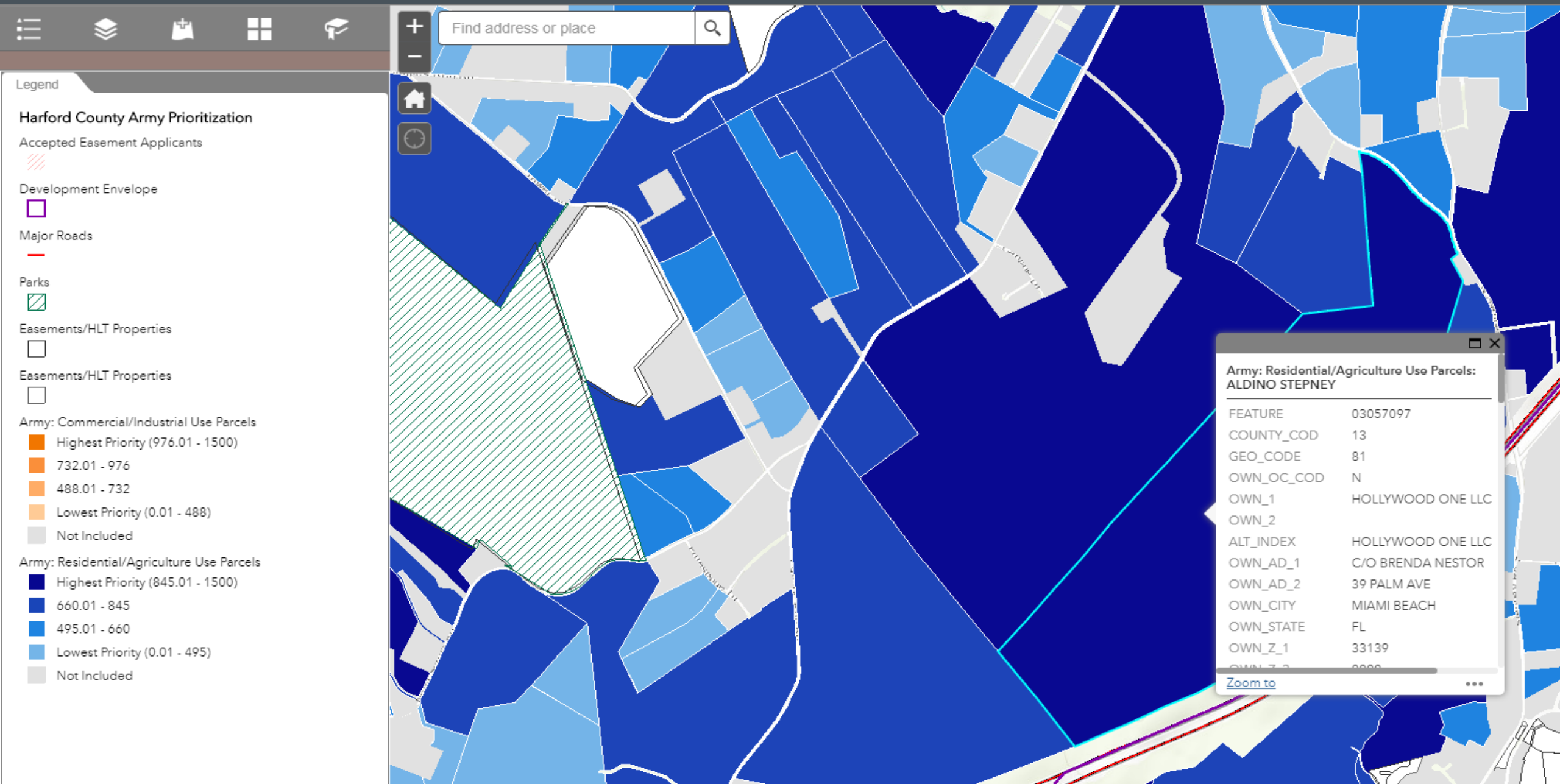
-  Lands Already Protected
-  Most Valued Lands
-  Other Valued Lands



Creating an Integrated System for the Planet



Creating Access to Data and Planning Tools



Building the Case for Conservation



LINCOLN INSTITUTE
OF LAND POLICY



CONSERVATION
INNOVATION
CENTER
CHESAPEAKE CONSERVANCY



Jeffrey Allenby

Director of Geospatial Technology
jallenby@lincolninst.edu



**LINCOLN INSTITUTE
OF LAND POLICY**

113 BRATTLE STREET
LINCOLNINST.EDU

CAMBRIDGE MA 02138
@LANDPOLICY

Susan Minnemeyer

Director of Conservation Technology
sminnemeyer@chesapeakeconservancy.org



716 GIDDINGS AVE, STE 42
CHESAPEAKECONSERVANCY.ORG

ANNAPOLIS, MD 21409
@CHESCONSERV